



508 Lutwyche \$122,500 QLD

Traditional Style Queenslander with Old World Style!

This amazing house is currently divided into 2 flats and located in Lutwyche, Brisbane. Featuring 3+ bedrooms, multiple enclosed verandah's and store rooms.

VJ walls and Ceilings

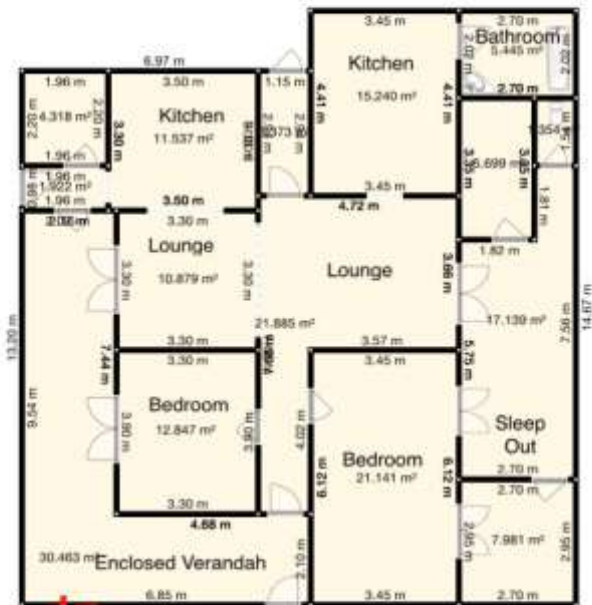
French Doors

Floor depth sash window in 2nd bedroom

Massive master bedroom (over 6.0m x 3.4m!)

2 kitchens – you decide which one to keep!

2 bathrooms, one with clawfoot bath



*This house includes **delivery within 100 km of current location and stumping to height of 1.0 metre using 75x75x4mm Duragal posts with a standard stump hole of 450x900mm.***