



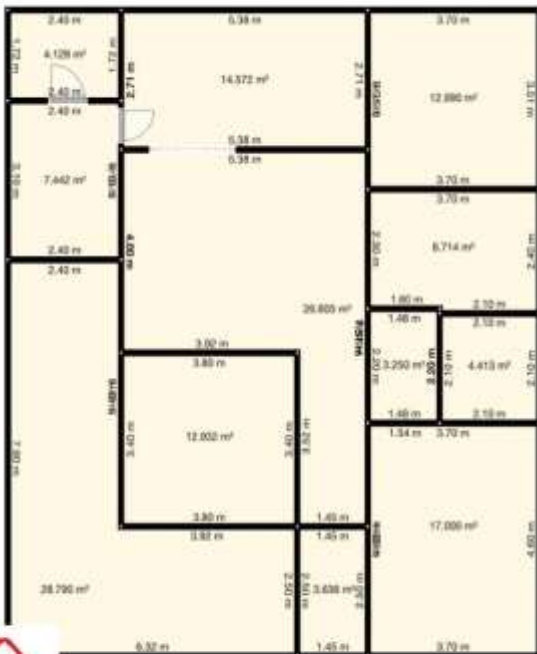
509 Lutwyche \$105,000 QLD

Traditional Gabled Queenslander

Right Hand Gable with two sides of verandah's (currently closed in)

This great sized Queenslander is currently divided into 2 flats in inner Lutwyche. It features VJ walls and some ceilings, hoop pine flooring and plenty of bedrooms.

You may decide to change the configuration of the current rooms to suit your needs.



*This house includes **delivery within 100 km of current location and stumping to height of 1.0 metre using 75x75x4mm Duragal posts with a standard stump hole of 450x900mm.***